

Ranked-Choice Voting

Implementation in Arlington County, Va

RCV

Ranked-Choice Voting or Instant Runoff Voting is a method of tabulation that allows voters to rank their preferred choices. If their first choice cannot win, their vote counts towards their next choice.

City Council			
Rank up to 3 candidates. Mark no more than 1 oval in each column.	First choice 1st	Second choice 2nd	Third choice 3rd
Valarie Altman Orange Party	<input type="radio"/>	<input type="radio"/>	<input type="radio"/>
George Hovis Yellow Party	<input type="radio"/>	<input type="radio"/>	<input type="radio"/>
Althea Sharp Purple Party	<input type="radio"/>	<input type="radio"/>	<input type="radio"/>
Mary Tawa Lime Party	<input type="radio"/>	<input type="radio"/>	<input type="radio"/>
Joe Li Tan Party	<input type="radio"/>	<input type="radio"/>	<input type="radio"/>
Phil Wilkie Independent	<input type="radio"/>	<input type="radio"/>	<input type="radio"/>

Process

Ballot Standards:

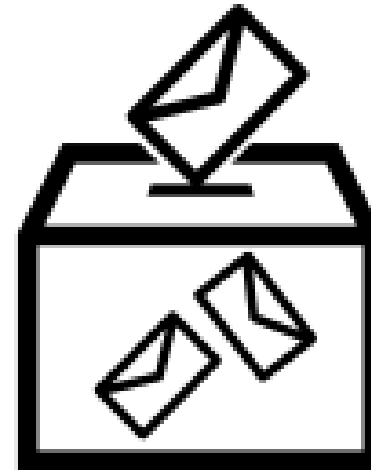
Guidelines issued by State Board of Election that determine how the office appears on the ballot.

2 types of races:

Single Vote Winner (Vote for 1) & Multi-Vote Winner (Vote for 2 or More)
SVW & MVW



Voter Marks Ballot



Voter Cast Ballot

Cast Vote Record (CVR)

Created:

Simply, a CVR is an excel file that shows how each ballot is marked.

CVR Tabulated:

Each scanner creates a CVR. This file is transported to Central Tabulation Facility. The file is loaded into central tabulation software.

Votes are tabulated according to tabulation rules. Rules might differ for SVW & MVW contests.

RCV Laws

RCV laws can be simple or more complex. At a minimum they should:

1. Identify the Office that will use RCV
2. Provide Ballot Standards (AKA Ballot Form)
3. Define Tabulation Rules
4. Clarify how Results are Reported

Arlington's Current RCV Policy

§ 15.2-705

The board may provide, by ordinance, for the nomination or election of candidates by instant runoff voting pursuant to § [15.2-705.1](#).

§ 15.2-705.1

"Instant runoff voting" means a method of casting and tabulating votes in which (i) voters rank candidates in order of preference, (ii) tabulation proceeds in rounds such that in each round either a candidate or candidates are elected or the last-place candidate is defeated, (iii) votes for voters' next-ranked candidates are transferred from elected or defeated candidates, and (iv) tabulation ends when the number of candidates elected equals the number of offices to be filled. "Instant runoff voting" is also known as "ranked choice voting."

"Ranking" means the ordinal number assigned on a ballot by a voter to a candidate to express the voter's preference for that candidate. Ranking number one is the highest ranking, ranking number two is the next-highest ranking, and so on, consecutively, up to the number of candidates indicated on the ballot.

B. Elections to nominate candidates for and to elect members to the board of supervisors in a county operating under the county manager plan may be conducted by instant runoff voting pursuant to this section.

C. The State Board may promulgate regulations for the proper and efficient administration of elections determined by instant runoff voting, including (i) procedures for tabulating votes in rounds, (ii) procedures for determining winners in elections for offices to which only one candidate is being elected and for offices to which more than one candidate is being elected, and (iii) standards for ballots pursuant to § [24.2-613](#), notwithstanding the provisions of subsection E of that section.

D. The State Board may administer or prescribe standards for a voter outreach and public information program for use by any locality conducting instant runoff voting pursuant to this section.

RCV Laws

RCV laws can be simple or more complex.

- ~~1. Identify the Office that will use RCV~~
2. Provide Ballot Standards (AKA Ballot Form)
3. Define Tabulation Rules
4. Clarify how Results are Reported

Blank Slate

Identify Steps

1. The (county) board may provide, **by ordinance**, for the nomination or election of candidates by instant runoff voting.
2. The State Board **may** promulgate regulations for the proper and efficient administration of elections determined by instant runoff voting, including
 - procedures for **tabulating** votes in rounds,
 - procedures for determining winners in elections for offices to which only one candidate is being elected and for offices to which more than one candidate is being elected, and **(SVW & MVW)**
 - **standards for ballots** pursuant to § [24.2-613](#).

Not Mentioned: Certify Voting Equipment § [24.2-629](#)

RCV Laws

RCV laws can be simple or more complex.

- ~~1. Identify the Office that will use RCV~~
2. Provide Ballot Standards (AKA Ballot Form)
3. Define Tabulation Rules
4. Clarify how Results are Reported

What we Know: Current Technical Requirements & Status

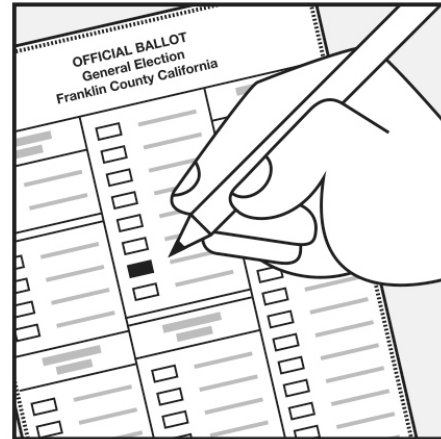
- Arlington's County Board race requires tabulation for both SVW & MVW races.
- Arlington uses 2 Ballot Layout & Tabulation Processes.
- **Unisyn OpenElect Voting System**
 - **Partially Compliant:**
 - Up to 3 Rankings
 - Grid Layout
 - SVW Only (MVW in certification process)
 - Central Tabulation

- **MyVaBallot**
 - **Not Compliant:**
 - No Layout Options
 - Tabulated by Hand
 - No Cast Vote Record (CVR) created
 - Results are reported to SBE using State system
 - **Not Compliant**

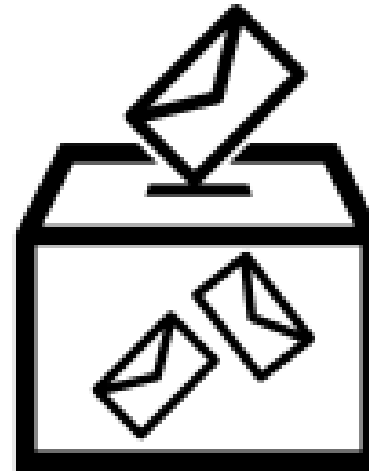
Process

Unisyn Ballot
98% of Voters
Partial Compliance

MyVaBallot
2% of Voters
(Overseas, Military,
Low Vision voters
voting by Mail.)
Not Compliant



Voter Marks Ballot



Voter Cast Ballot

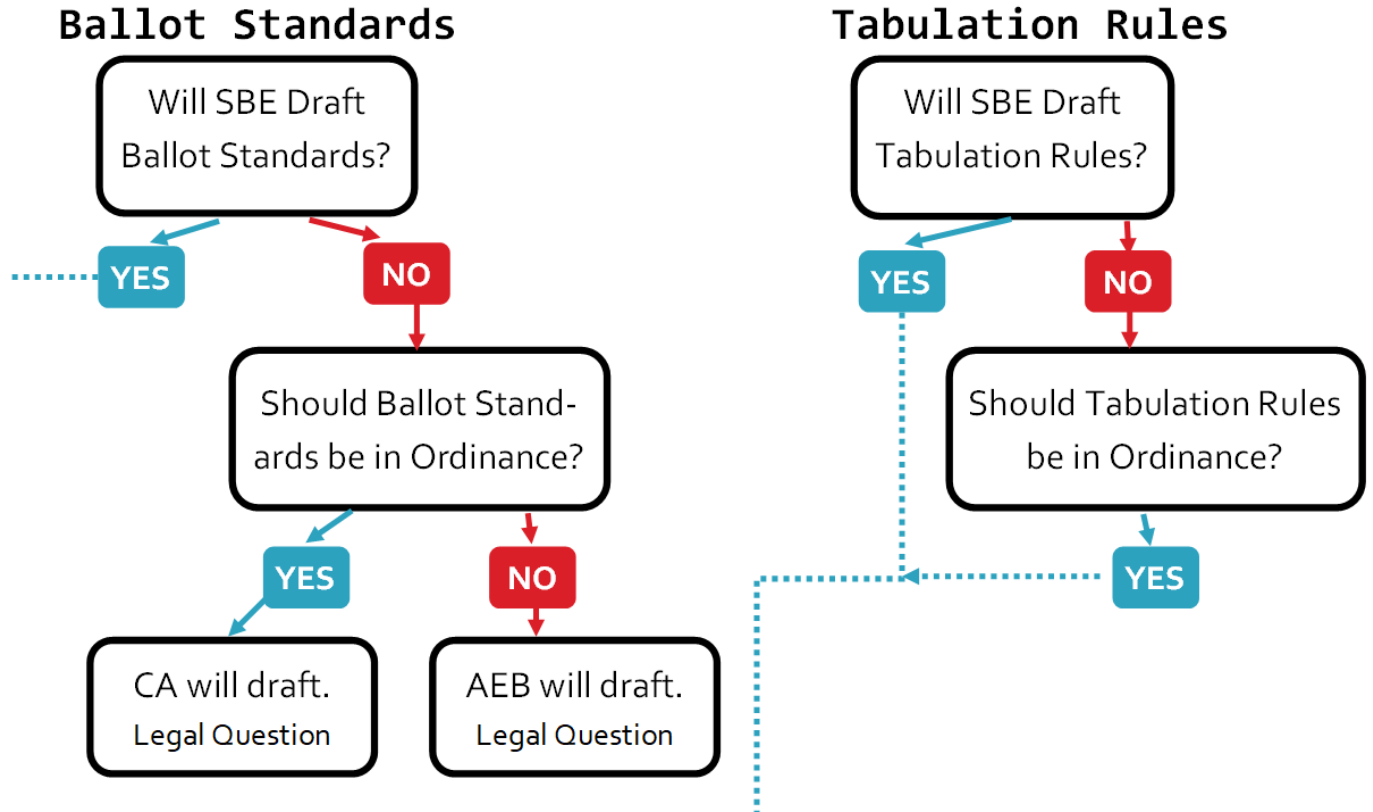
Unisyn Ballot
CVR created by Scanner

+

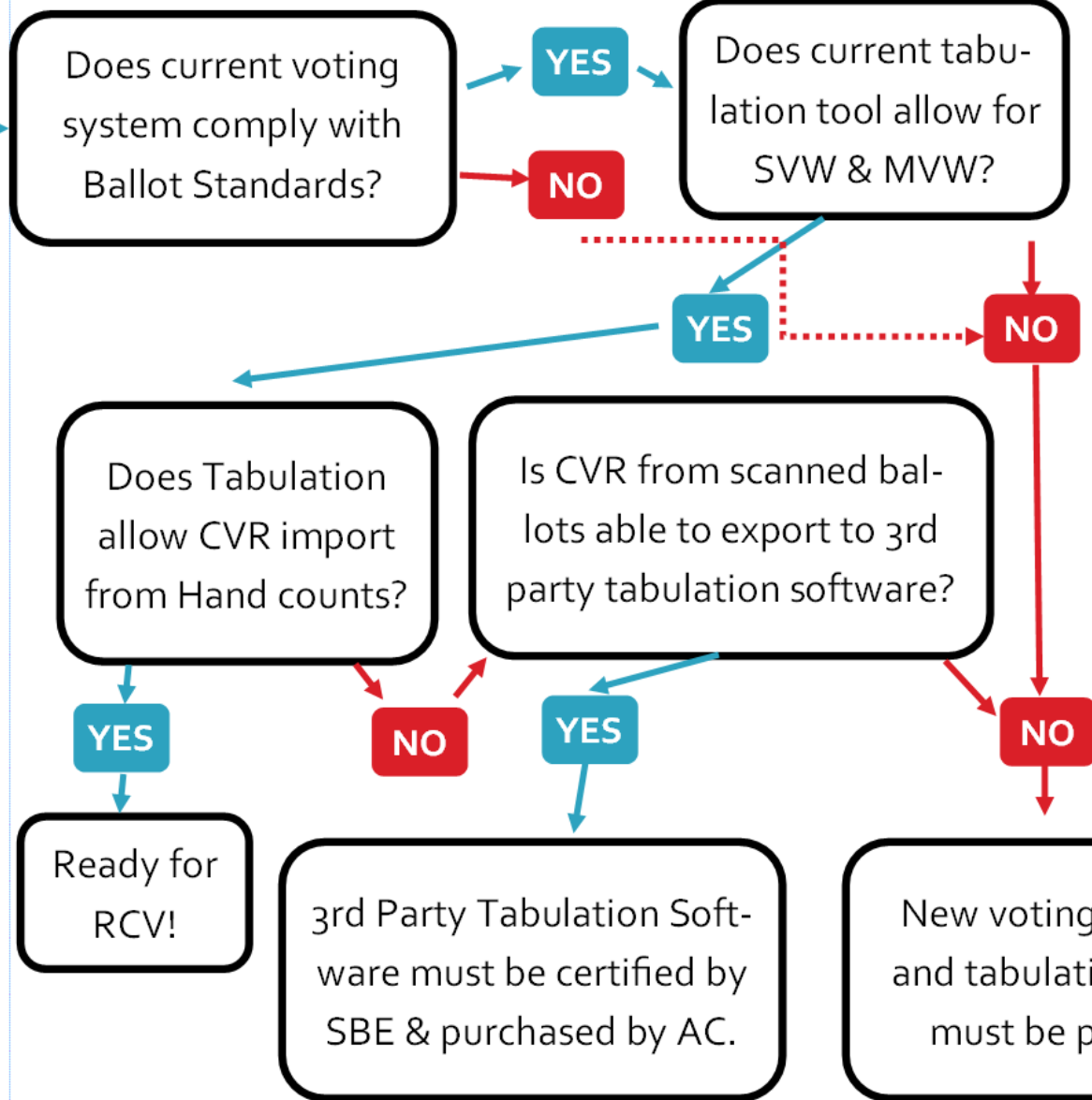
**MyVaBallot + Rejected
Unisyn Mail Ballots**
CVR created Manually

Results

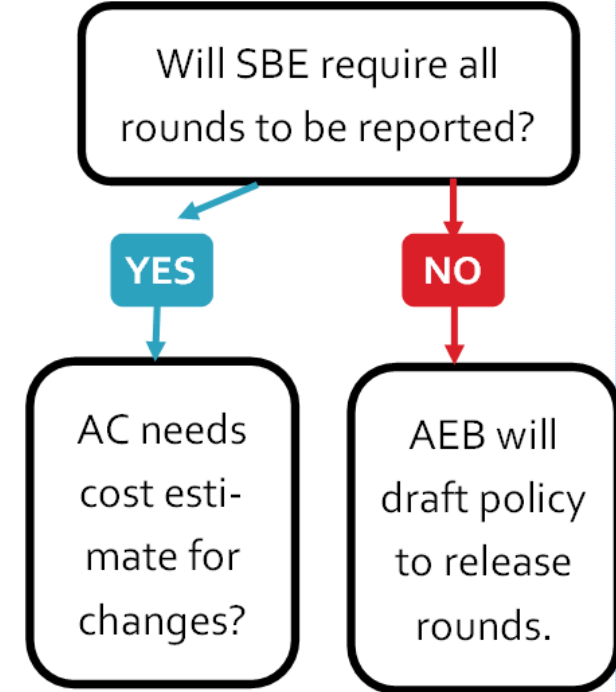
Policies
Determine
Technology
Requirements



Technology Gaps



Results Reporting



Steps

1. County Board needs to formally indicate their desire to change to RCV.
2. SBE needs to adopt or decline to adopt
 1. Ballot Standards
 2. Tabulation Rules
 3. Clarify how Results are Reported
3. SBE needs to confirm voting equipment is certified for RCV.



How much will implementation cost?

- Known Expenses
 - Voter Outreach
- Unknown Expenses
 - Voting Equipment
 - Changes State System